

Follow one of your tour suggestions and make sure you experience all the highlights. All routes are accessible by electrical wheelchair, as they follow either a pedestrian street or a bike path and sidewalk.

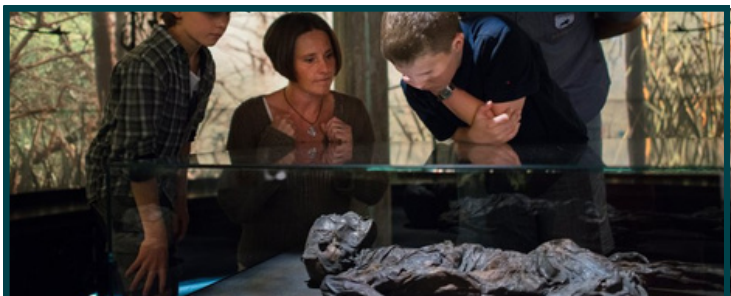
The City Tour

Start the tour at **DGI-huset**, and take the gravel path that runs between the Library and Vejle Center Hotel. The path runs along **Vejle Å (1)** and takes you by **The Five Sisters (2)**. The next stop is at **Sønderbro and Søndertorv (3)** the southern end of the shopping street. Here you find the big indoor shopping center Bryggen and the Lido Cinema. There are also several places to eat. From Søndertorv you can enjoy a view to the town's windmill. Turn left, and head up the shopping street and make a stop at **Den Smidske Gård (4)**. You are welcome to go through the gate, but be aware of the uneven foundation. Continue up the shopping street and turn right at the intersection. Here you will see the **Sct. Nikolai Church (5)**. Head back to the pedestrian street, and make a stop at the **Town Hall (6)**. Here you might want to take a break and enjoy some freshly brewed coffee and baked goods. Continue down the pedestrian street until you reach **Flegborg**, and turn left. Follow **Flegborg** and cross the roundabout. You are now at the **The Music Theater (7)**.

Continue behind the The Music Theater and keep left. You now reach the **Art Museum (8)**. Follow the same way back to the pedestrian street. Follow the pedestrian street and head for **Vejle Midtpunkt (9)**, a place for food, delicacies, music and independent shops. The last part of the tour takes you along **Dæmningen (10)**. Here you will find restaurants, street food, and nightlife. Follow the pedestrian street and the gravel path along Vejle Å back to DGI-huset.

Spinderihallerne and the Heritage Museum

To visit **Spinderihallerne and the Heritage Museum (18)** follow **Boulevarden**, and turn right at the bike and pedestrian path across from **Vestbanevejen**. The path is marked as *Regional Route No. 36*.



The Waterfront Tour

Follow **The City Tour** to **Sct. Nikolai Church (5)**. From here, follow **Kirkegade**, which turns into **Havnegade**. Along this street, you will pass **Økolariet (11)**, **VisitVejle and the train station (12)**. Turn right, and follow **Havnegade** until you reach the roundabout. In the roundabout you will see a **Sculpture of a Bike (13)**. Turn left in the roundabout and follow **Østerbrogade**. Then turn right and follow **Treschowsgade**, and then keep following the bike path and sidewalk to **Dyrskuevej**. Follow **Dyrskuevej** to the waterfront and turn right and head towards **Havneøen**. Here you can visit **Fjordenhus (14)**. Now head back along the path along the waterfront and go towards **Tirsbæk Strandvej**. Here you can make a stop at the **Kayak Club (15)** and by **The Wave (16)**. Turn right onto **Tirsbæk Strandvej**, and follow the path along the water until you reach **Skyttehushaven (17)**. Enjoy the view of the Vejle Fjord Bridge. If you want you can follow the path even further, all the way to **Albuen** (just outside of the map). Follow the same way back.

The Bindeballe Trail

The **Bindeballe trail (19)** follows the old Vandel Railway. This means it is mostly flat and almost car-free. The trail offers beautiful scenery and is wheelchair friendly from its starting point in Vejle all the way to the Raving Bridge, a reconstructed bridge built in Viking Age. The trip from Vejle to Raving Bridge is 13,5 km each way. The trail has its starting point by **Spinderihallerne (18)**. The first part of the trail runs parallel to **Vestbanevejen**. From DGI-Huset it is easiest to follow **Boulevarden** and turn left onto the trail by **Vestbanevejen**. The trail is marked as *Regional Route No. 36*.

